



The **KEIZER** home plan by Simplicity



At 1692 square feet, The Keizer is a mid-size home that makes the most of its single-story layout. This thoughtfully designed space begins as you enter the home with a convenient coat closet off the entryway. From there, you're welcomed into the main living space by stunning vaulted ceilings, where you'll find the great room, dining room and kitchen featuring an oversized island with seating and a large pantry. The vaulted ceiling continues into the private main suite, where you'll find a dual vanity bathroom and spacious walk-in closet. On the other wing of the home lives the shared bathroom and two additional bedrooms, each with generous walk-in closets. An optional 4th bedroom or den is available with this versatile plan.

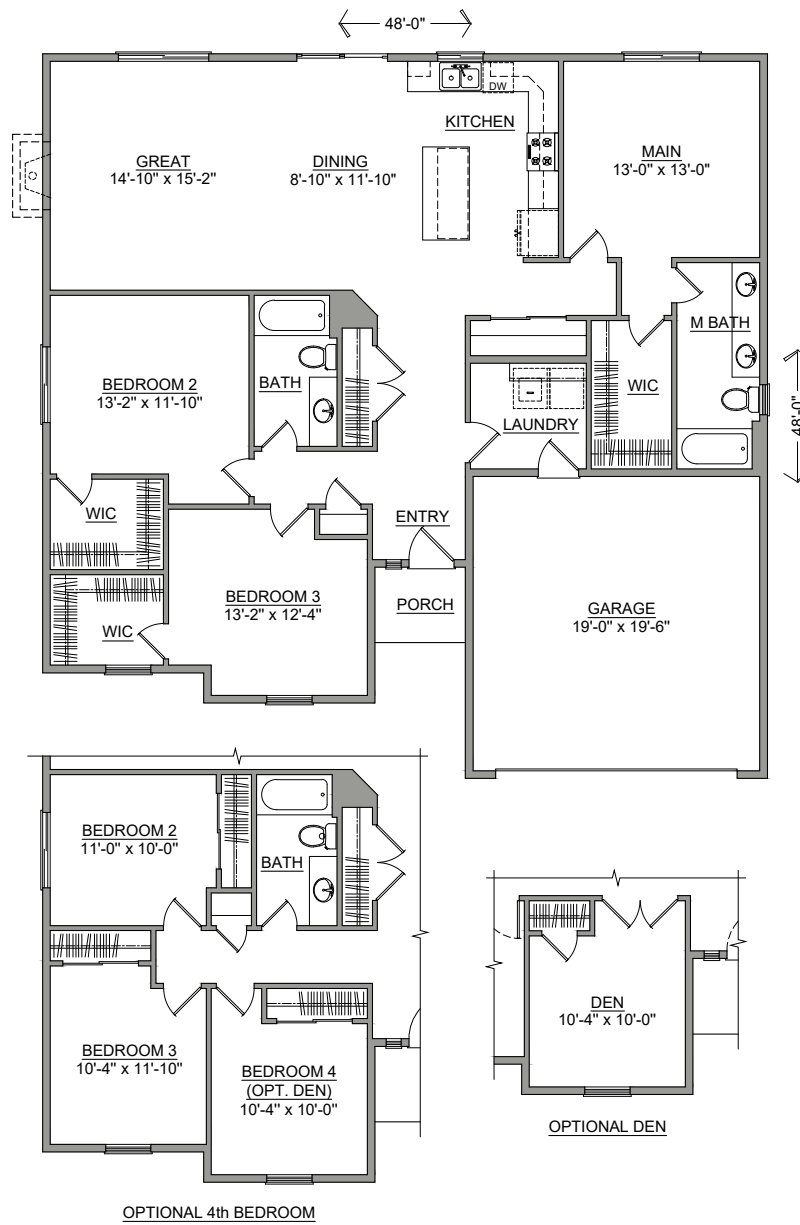


SIMPLICITY
BY HAYDEN HOMES

The KEIZER home plan by Simplicity



3 BEDROOMS 2 BATHROOMS 1692 SQUARE FEET



Build your new home online at www.SIMPLICITY-HOMES.com