



The **PALISADE** home plan by Simplicity



At 1852 square feet, The Palisade is a single-level home designed around where your family lives most. Under the vaulted ceilings, the open layout features a large great room that flows into the dining room and kitchen, making it perfect for entertaining. The fully appointed kitchen offers a breakfast bar and large pantry for ample storage. A spacious main suite features vaulted ceilings, an optional private patio entrance, luxury main bath with dual vanity, large soaker tub, separate shower and an expansive walk-in closet. For those working from home, the den off the entryway makes the perfect home office and can be converted into a fourth bedroom. Unique to this plan, an optional tandem, 3-car garage or a combination of the two are available.

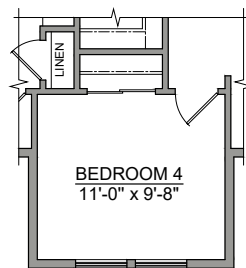
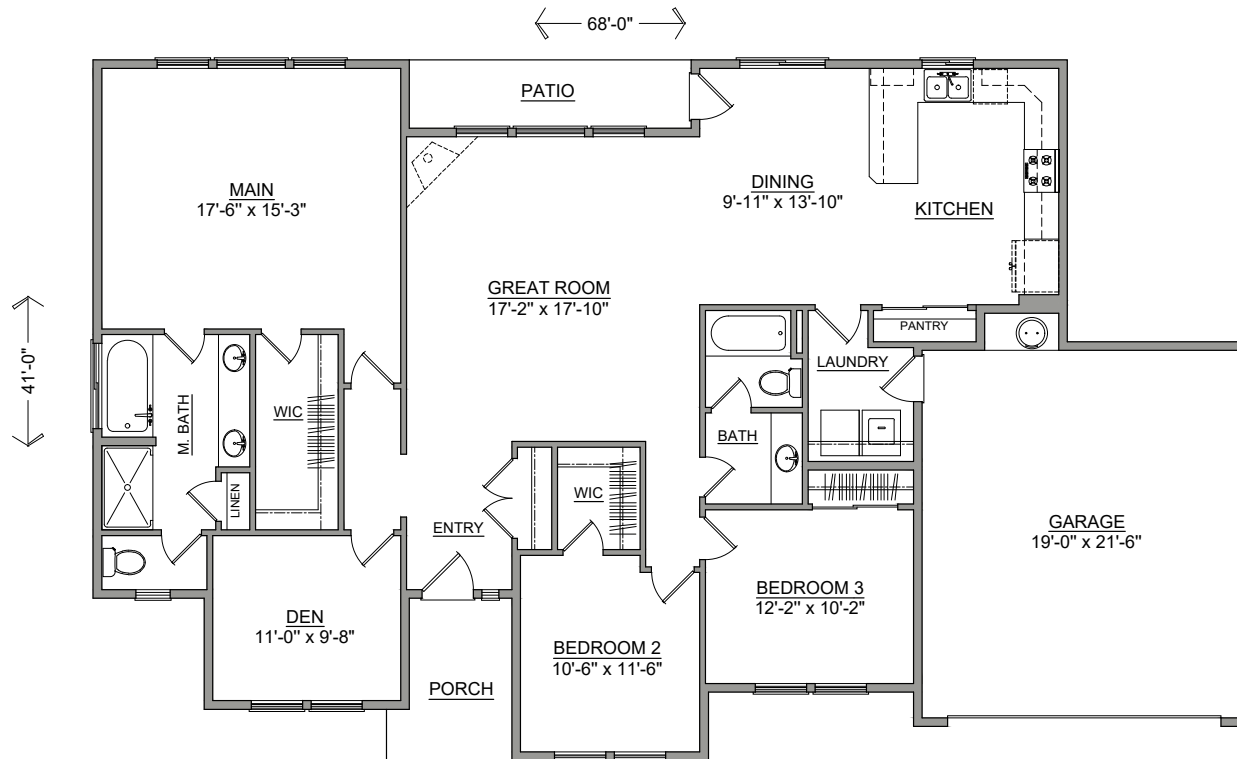


SIMPLICITY
BY HAYDEN HOMES

The PALISADE home plan by Simplicity



3 BEDROOMS 2 BATHROOMS 1852 SQUARE FEET



OPTIONAL BEDROOM 4



Build your new home online at www.SIMPLICITY-HOMES.com