

The **ELITE MODERN**

3 Bed + Den + loft | 3 Bath | 2751 Sq. Ft



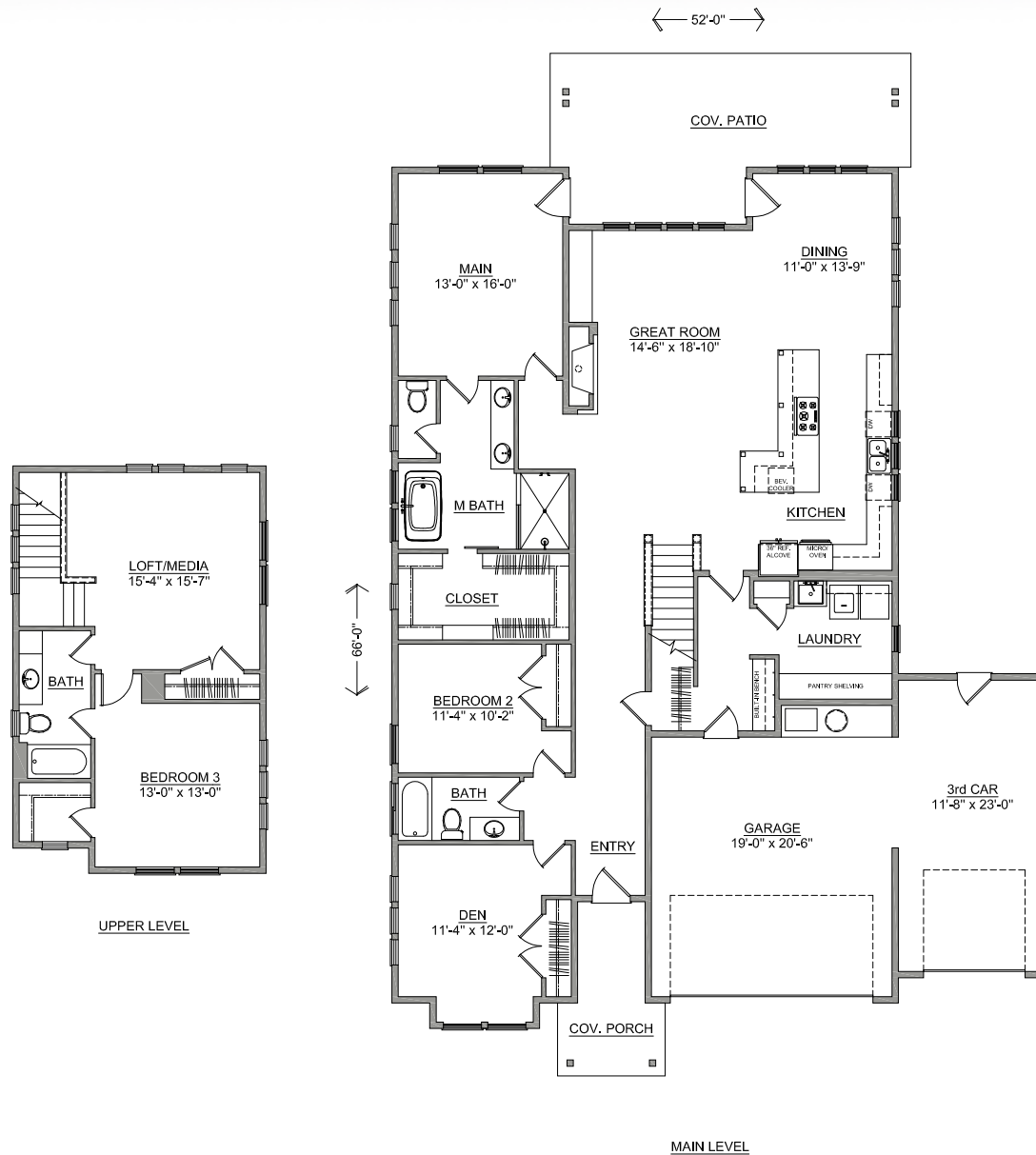
The 2751 square foot Elite Modern home plan has a uniquely stylish exterior. Inside the light and bright open concept kitchen and great room are a chef and entertainer's dream. The fully-appointed kitchen has an L-shaped island with stovetop, extra counter and cupboard space as well as room to add any accessory imaginable. The great room features built-in cabinets surrounding a dramatic fireplace, vaulted ceilings, and a full wall of windows overlooking the oversized covered back patio. The main suite is another example of this home's impressiveness, with an extra-large closet, main bath with double vanity, soaking tub and grand shower. The spacious laundry room leads to the garage. Up the stairs are the loft/media room and junior suite.



SIMPLICITY
BY HAYDEN HOMES

The ELITE MODERN

3 Bed + Den + loft | 3 Bath | 2751 Sq. Ft



Build your new home online at www.SIMPLICITY-HOMES.com/select