



# The **SELWAY** home plan by Simplicity



The 2052 square foot Selway is bright and open, evident from the moment you enter the expansive great room. The kitchen is equipped with an island large enough for entertaining, ample counter space, a pantry and several upper cabinets. There are four spacious bedrooms, one of which is the luxurious main suite. Featuring an oversized closet, double vanity, soaking tub and separate shower, this main suite is the epitome of a relaxing retreat. This home is well-appointed with storage space and charming features, from vaulted ceilings to additional closets. The Selway is a flexible home plan, with the option to replace the 4th bedroom with a den, or addition of a cozy fireplace in the great room.

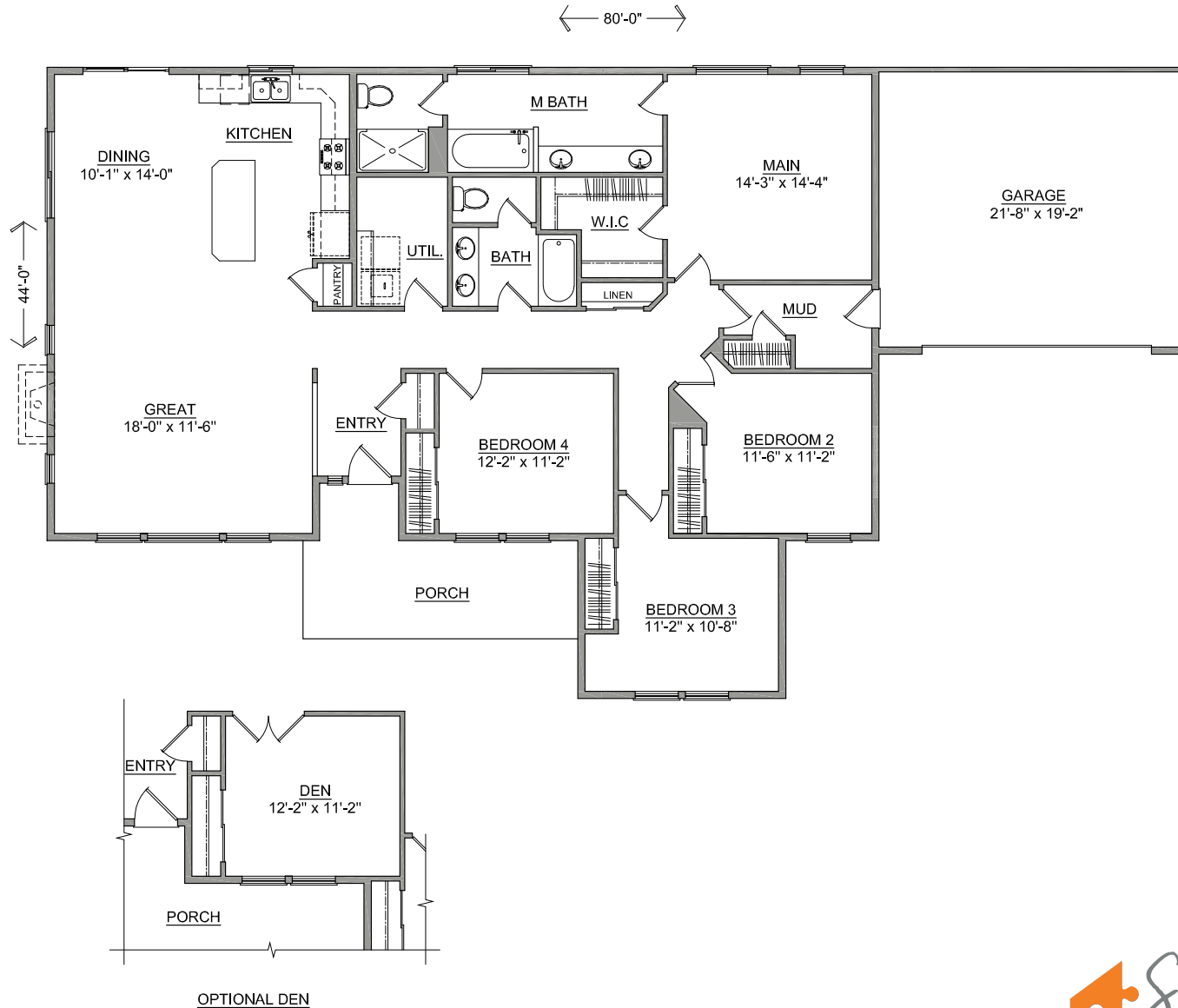


**SIMPLICITY**  
BY HAYDEN HOMES

# The **SELWAY** home plan by Simplicity



4 BEDROOMS 2 BATHROOMS 2052 SQUARE FEET



Build your new home online at [www.SIMPLICITY-HOMES.com](http://www.SIMPLICITY-HOMES.com)