



The **VALE** home plan by Simplicity



The 2968 sq. ft. Vale home is not only spacious, but provides ample storage options. The incredible storage space begins with the oversized garage and practical mudroom entrance. This leads into the dining and kitchen area, which contains a large pantry, island and abundant counterspace – perfect for entertaining or day-to-day family life. The kitchen, adjacent to the great room features lots of natural lighting. The second level features even more space and storage, beginning with the versatile loft area that can turn into an optional junior suite. The expansive main suite opens with double doors and boasts a coffered ceiling. The main bathroom features a dual vanity, water closet, soaking tub and another oversized closet. Rounding out the home are two additional sizable bedrooms with substantial closet space as well. Live in organized comfort, in a home perfect for those needing extra space and storage.

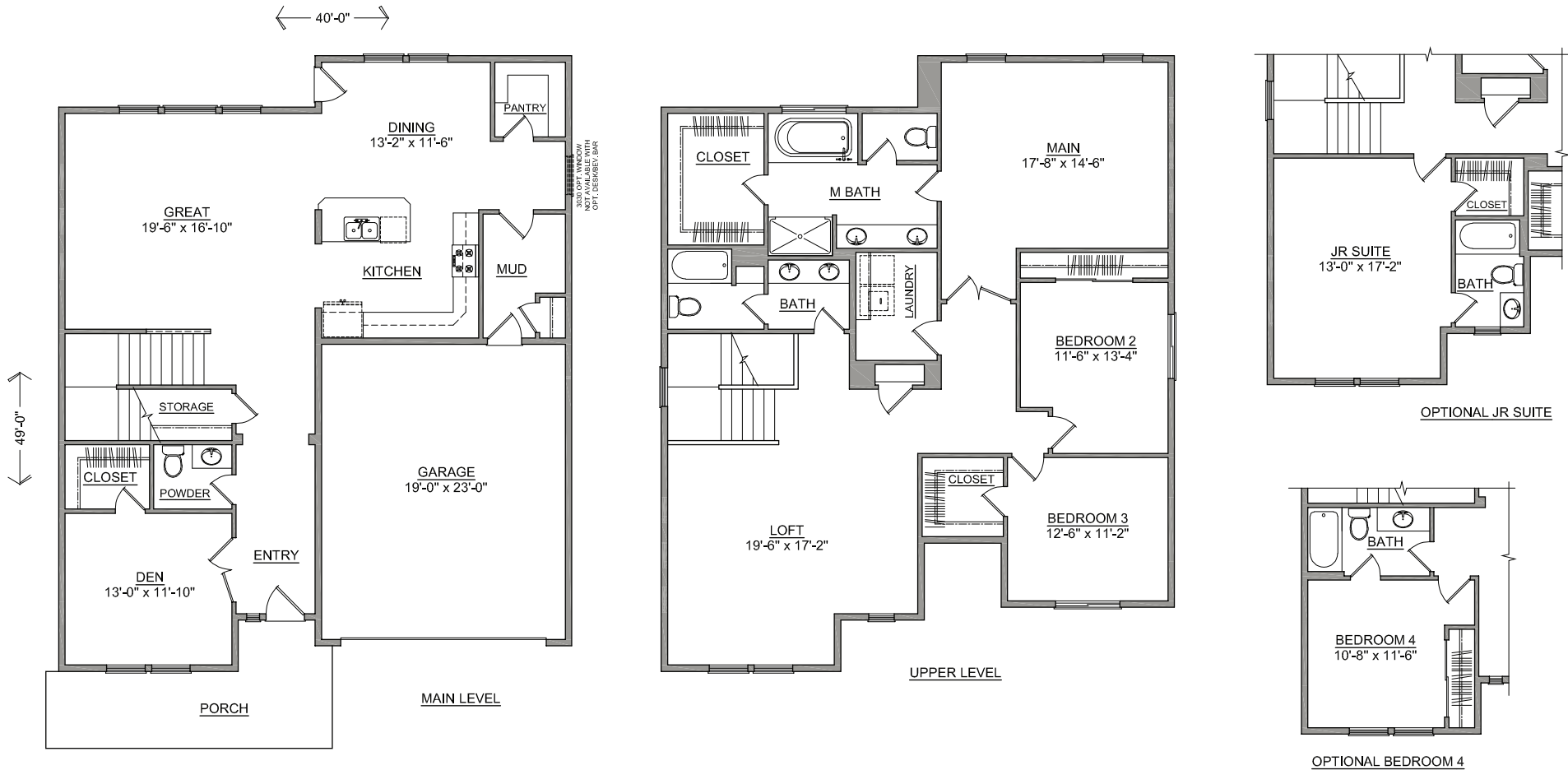


SIMPLICITY
BY HAYDEN HOMES

The VALE home plan by Simplicity



4 BEDROOMS 2.5 BATHROOMS 2968 SQUARE FEET



SIMPLICITY
Signature
SERIES

Build your new home online at www.SIMPLICITY-HOMES.com