



The **DOVER** home plan by Simplicity



The 1388 square foot Dover proves that a mid-size home can be more than it appears. Vaulted ceilings span the dining room as well as the spacious living room. An optional half wall can separate these rooms for private dining and living spaces. The kitchen provides ample counter space and cupboard storage. The main suite is expansive, features two spacious closets and a dual vanity bath. Sharing the second bathroom, each of the two other bedrooms is sizable-one providing an oversized closet while the other may be converted into an optional den.

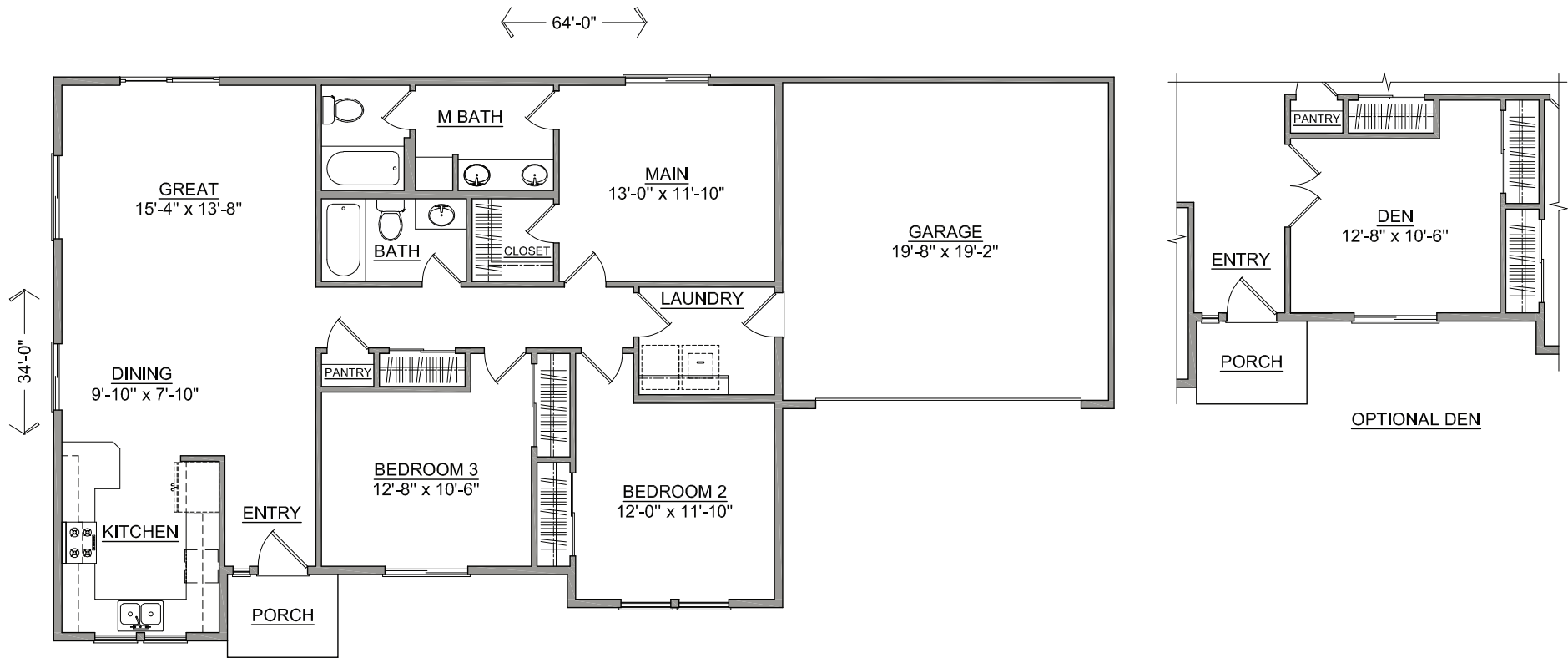


SIMPLICITY
BY HAYDEN HOMES

The **DOVER** home plan by Simplicity



3 BEDROOMS 2 BATHROOMS 1388 SQUARE FEET



SIMPLICITY
Signature
SERIES

Build your new home online at www.SIMPLICITY-HOMES.com