



The **ORCHARD ENCORE** home plan by Simplicity



Flexible space is the greatest asset of this encore floor plan based upon the best-selling Orchard model. At 2258 square feet, this larger home is a favorite of frequent entertainers for its expansive kitchen, walk-in pantry, and adjoining, open living and dining areas. For an added bonus, choose between an optional desk or beverage center along one wall to complete this beautiful layout. The spacious and private main suite boasts a deluxe ensuite with dual vanity, separate shower and an enormous closet. The other two sizable bedrooms—one of which can be converted into a den or office—share a second bathroom. Exclusively available for the Orchard Encore, choose between an excessive bonus room or optional Junior suite as a generous 4th bedroom—this option offering a walk-in closet and it's own full, private bathroom—located up one flight of stairs above the garage.

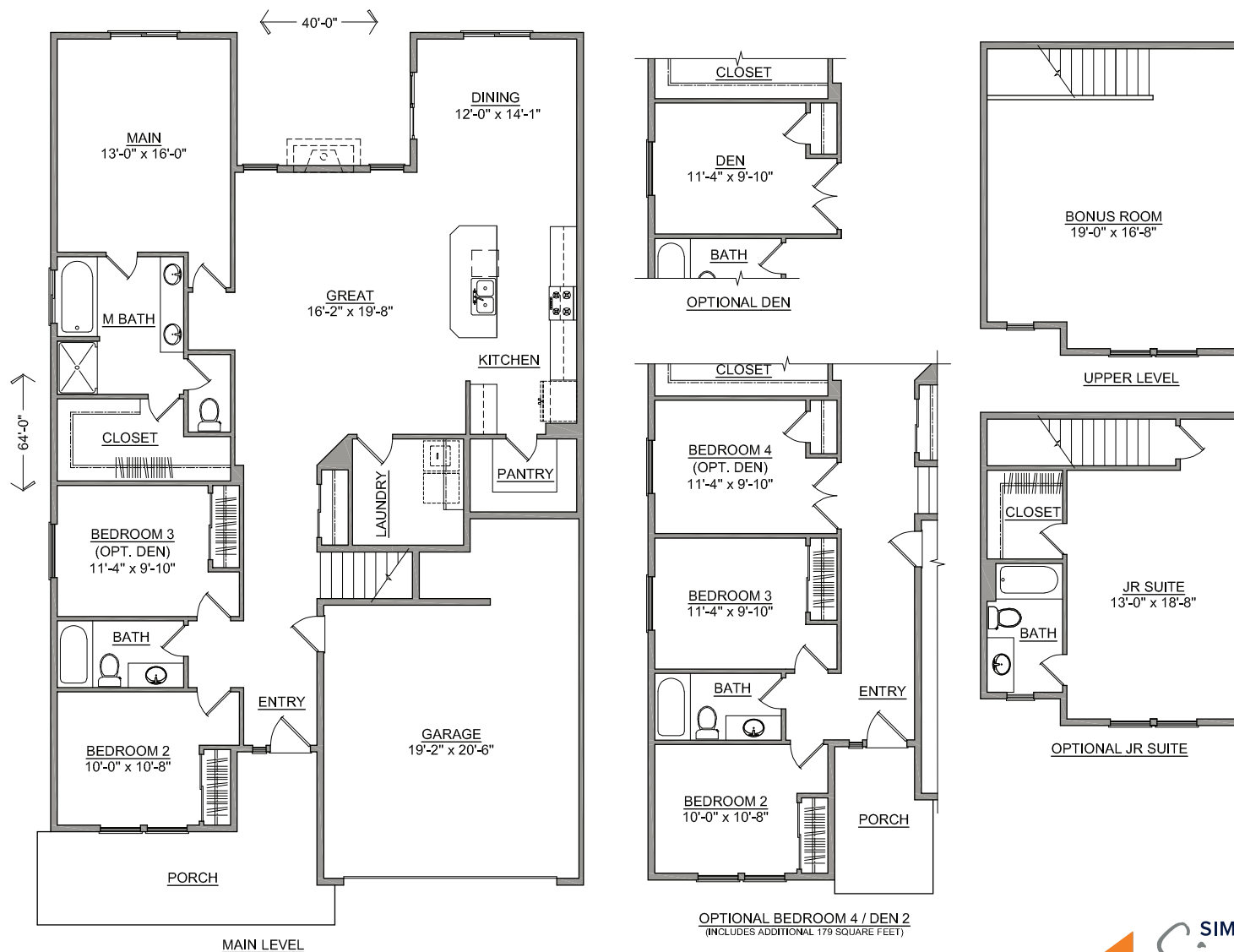


SIMPLICITY
BY HAYDEN HOMES

The **ORCHARD ENCORE** home plan by Simplicity



3 BEDROOMS **2** BATHROOMS **2258** SQUARE FEET



SIMPLICITY
Signature
SERIES

Build your new home online at www.SIMPLICITY-HOMES.com

Prices, home designs and inclusive features are subject to change at any time without notice. Home plan dimensions and square footage are approximate. Area-specific inclusive features are subject to jurisdictional requirements. OR-185357 WA-SIMPLH915C8 ID-RCE34089