



The **STONERIDGE** home plan by Simplicity



The 2026 square foot Stoneridge is popular with those needing more space in an efficiently planned two-story home. The first floor is open throughout the family and dining room and into the kitchen where there is a large island and plenty of cupboard storage. The formal dining room can be converted into an optional den or fourth bedroom with full bath. Upstairs, the expansive main suite features an oversized closet plus a deluxe ensuite bath – including a soaking tub and double vanity. The second floor is also home to two more large bedrooms, a full bathroom and the conveniently located laundry room. An optional 444 square foot bonus room adds even more living space in this versatile home.

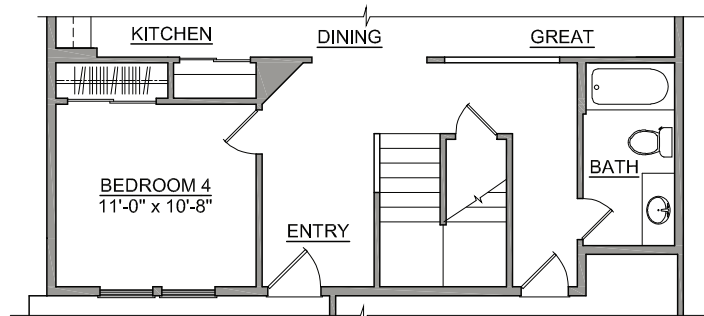
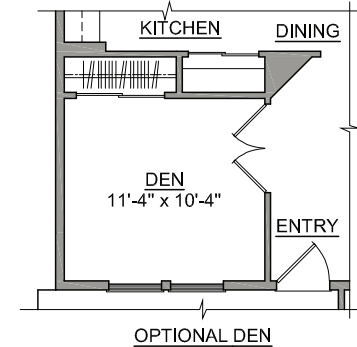
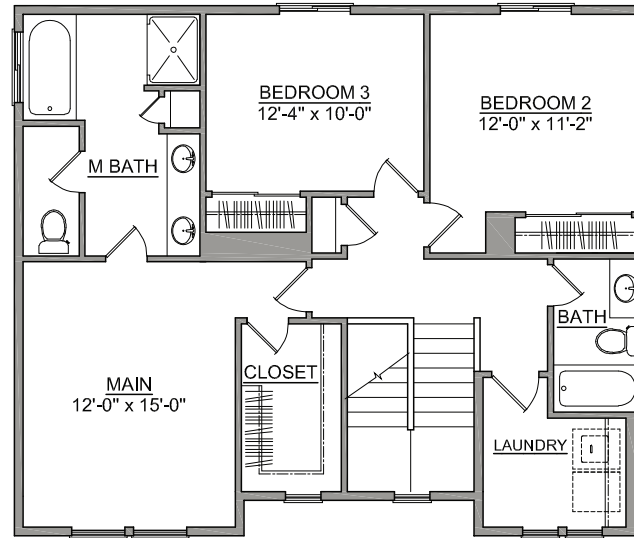
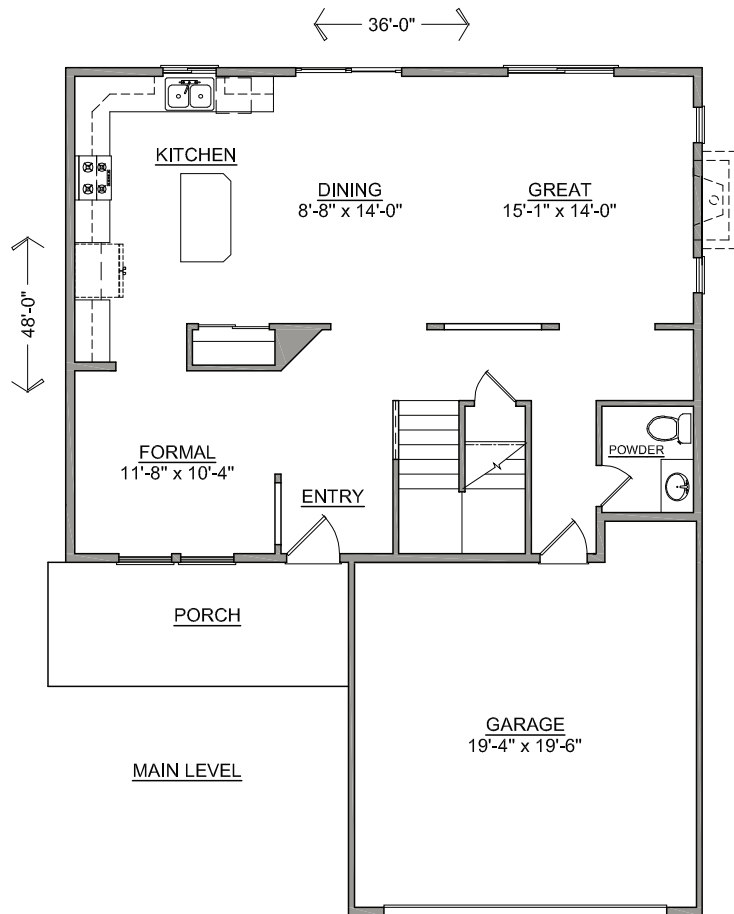


SIMPLICITY
BY HAYDEN HOMES

The **STONERIDGE** home plan by Simplicity



3 BEDROOMS **2.5** BATHROOMS **2026** SQUARE FEET



SIMPLICITY
Signature
SERIES

Build your new home online at www.SIMPLICITY-HOMES.com

Prices, home designs and inclusive features are subject to change at any time without notice. Home plan dimensions and square footage are approximate. Area-specific inclusive features are subject to jurisdictional requirements. OR-185357 WA-SIMPLH915C8 ID-RCE34089