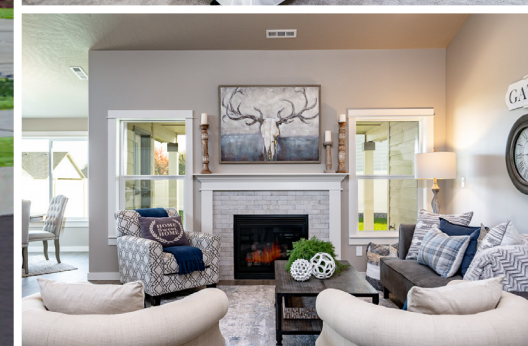




The **PACIFIC** home plan by Simplicity



The 1805 square foot Pacific is the entertainer's single-level dream home. Under the vaulted ceilings, the living room is sweeping, and an optional covered patio, just off the generous dining room, invites relaxation outdoors. The open kitchen offers a wealth of counter, serving and eating space and includes a bar area and optional built-in desk. This home affords more space to relax in a welcoming family room that may also be converted into an optional fourth bedroom. The spacious main suite sits under vaulted ceilings and boasts a luxury bath with an individual shower option adjoining the large closet.

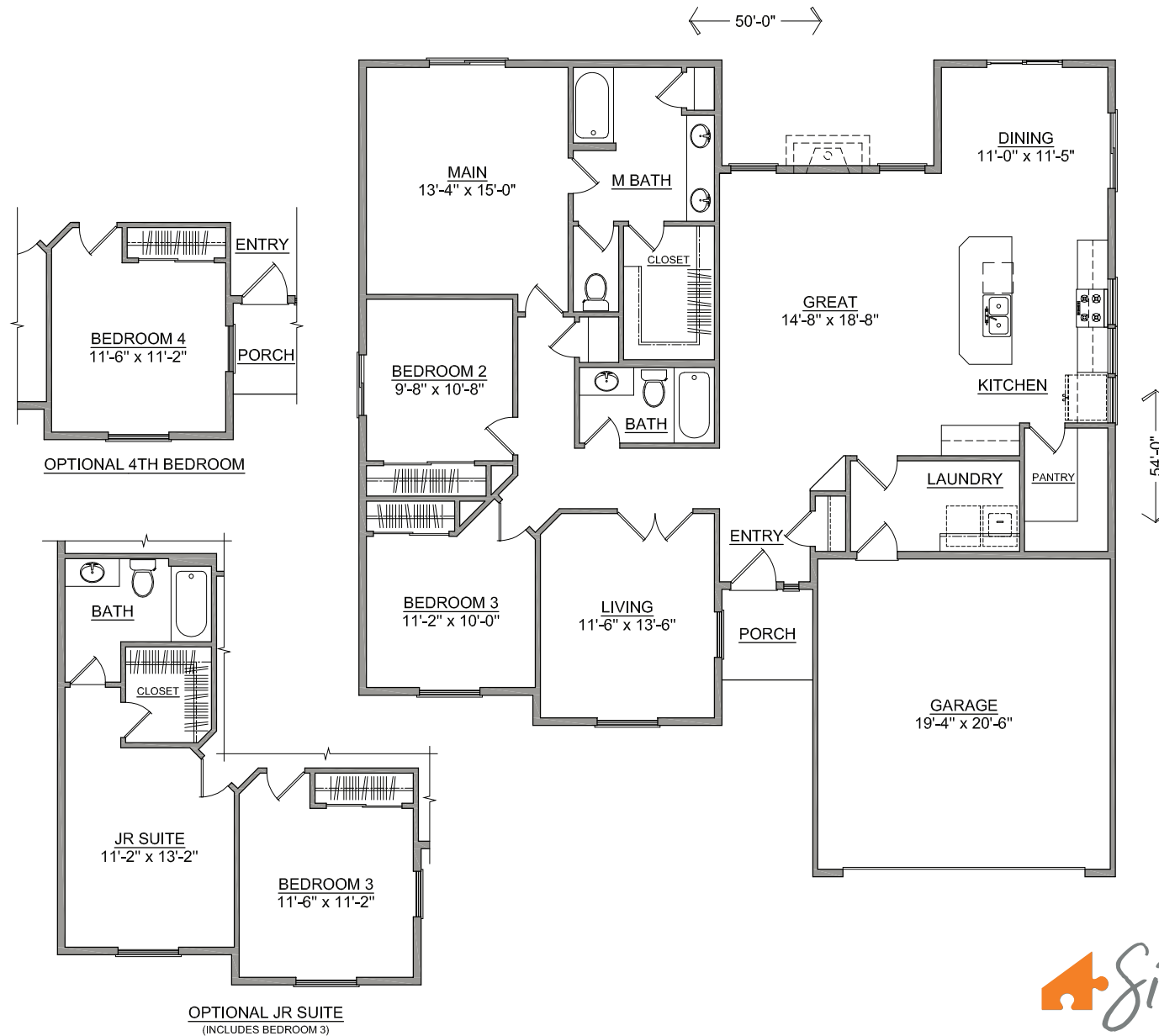


SIMPLICITY
BY HAYDEN HOMES

The **PACIFIC** home plan by Simplicity



3 BEDROOMS **2** BATHROOMS **1805** SQUARE FEET



SIMPLICITY
Signature
SERIES

Build your new home online at www.SIMPLICITY-HOMES.com