



The **METOLIUS** home plan by Simplicity



The 1787 square foot Metolius is an intelligently designed two-story plan that lives larger than most mid-sized plans. The first floor is open throughout the family and dining room and into the kitchen where there is plenty of counter space and cupboard storage. The alley-accessed garage gives this home tremendous street appeal. Upstairs, the versatile loft area can be converted to a fourth bedroom or den. The expansive main suite features a dual vanity bathroom and large closet. Rounding out this popular floor plan are two spacious bedrooms with large closets that share a second full bath.

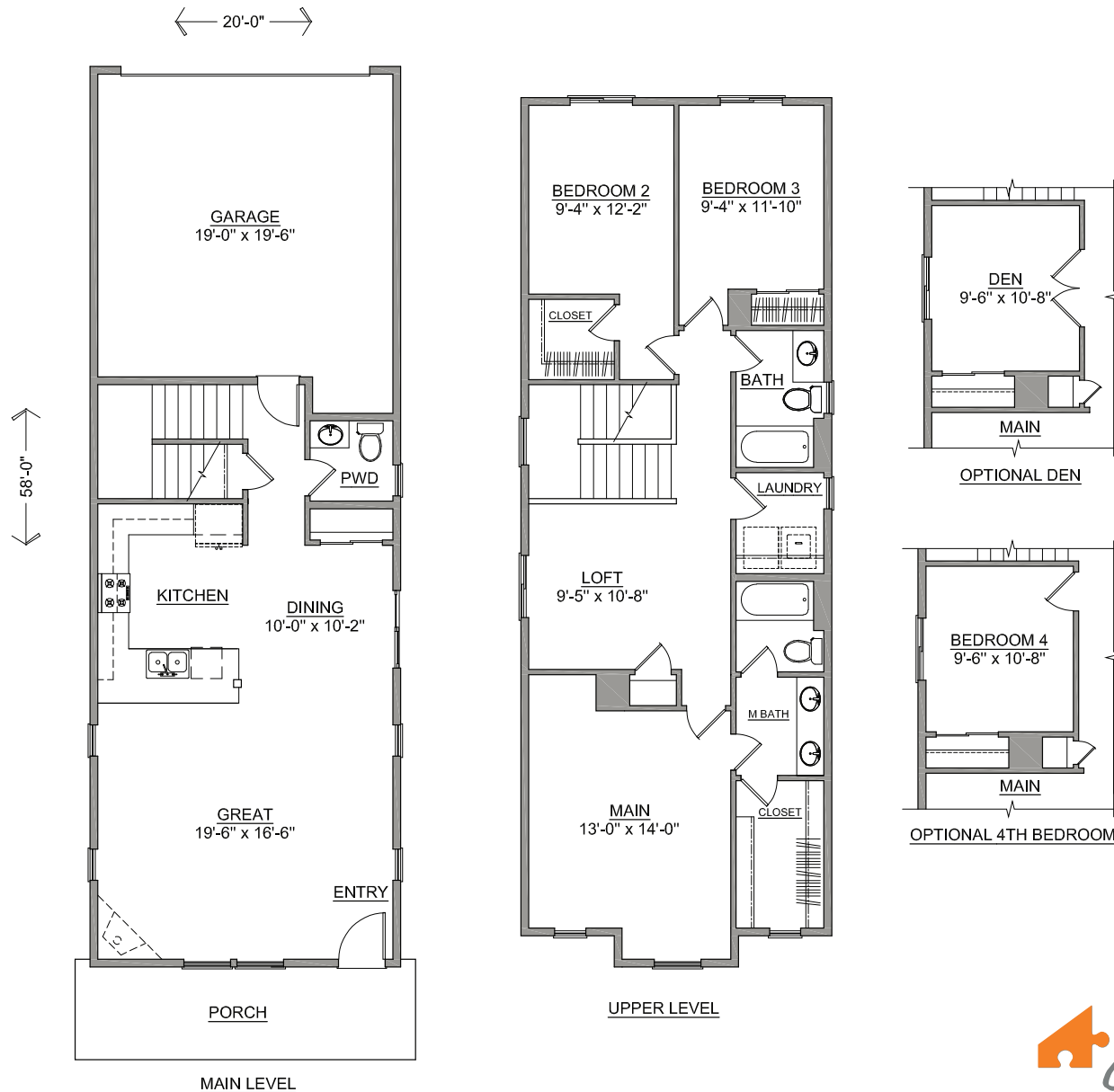


SIMPLICITY
BY HAYDEN HOMES

The **METOLIUS** home plan by Simplicity



3 BEDROOMS **2.5** BATHROOMS **1787** SQUARE FEET



SIMPLICITY
Signature
SERIES

Build your new home online at www.SIMPLICITY-HOMES.com

Prices, home designs and inclusive features are subject to change at any time without notice. Home plan dimensions and square footage are approximate. Area-specific inclusive features are subject to jurisdictional requirements. OR-185357 WA-SIMPLH915C8 ID-RCE34089