



The **MIDDLETON** home plan by Simplicity



The Middleton combines luxury and space in a two-story home plan. The first floor features an expansive living room and adjoining dining room, both overlooked by an open kitchen that offers ample counter space and cupboard storage, with the added convenience of a built-in desk or beverage center. Upstairs, the extravagant main suite boasts a luxurious dual vanity bathroom with a private water closet and shower, as well as an enormous closet. The two other sizeable bedrooms, each with generous closet space, share a large private bathroom and complete this well-rounded home.

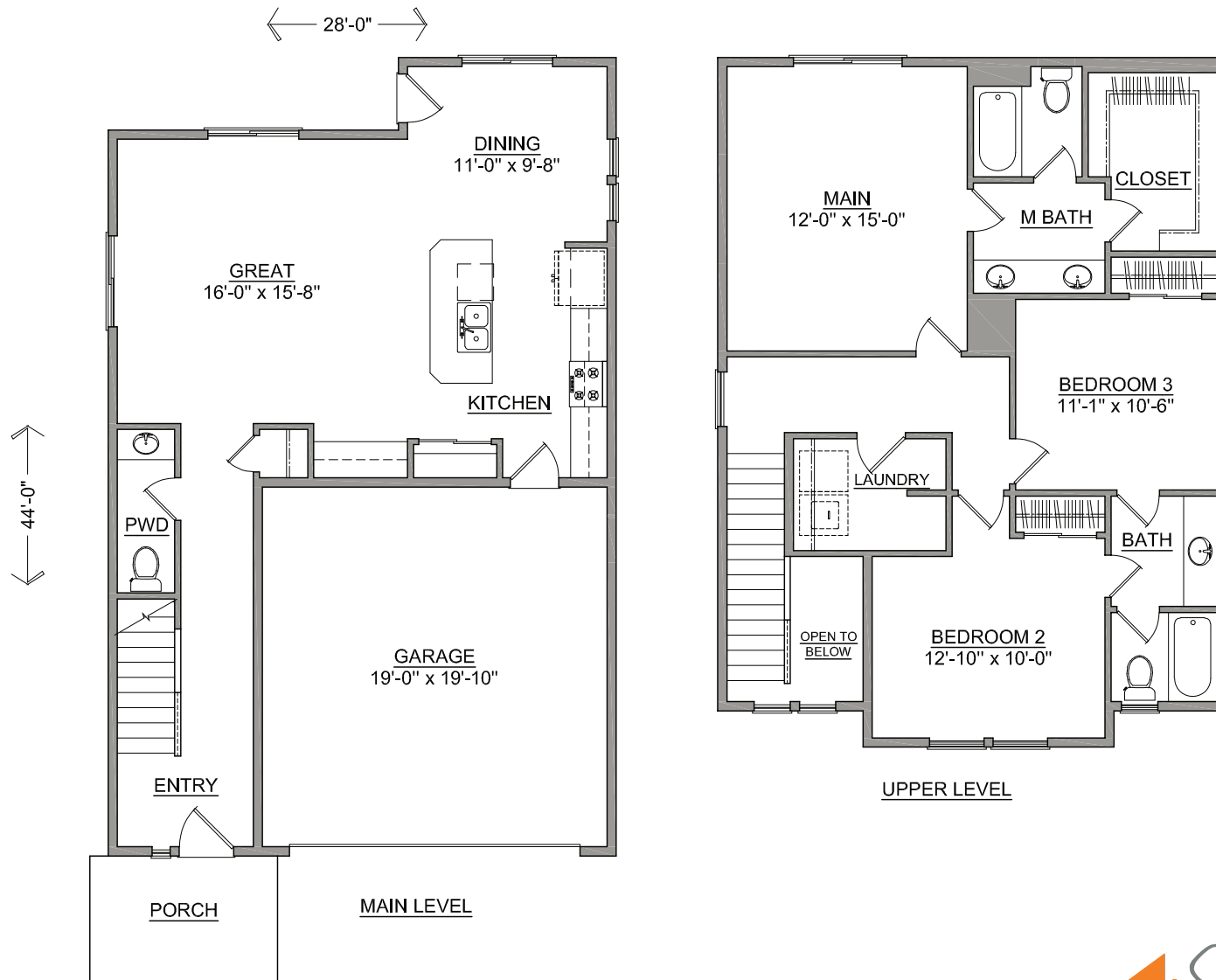


SIMPLICITY
BY HAYDEN HOMES

The MIDDLETON home plan by Simplicity



3 BEDROOMS 2.5 BATHROOMS 1743 SQUARE FEET



SIMPLICITY
Signature
SERIES

Build your new home online at www.SIMPLICITY-HOMES.com