



The **LINWOOD** home plan by Simplicity



The 1,632 square foot Linwood is a well-designed two-story home. The first floor is open throughout the great and dining room and into the kitchen where there is a breakfast bar and plenty of cupboard storage. Upstairs, the large main suite features a separate oversized closet and dual vanity ensuite. The second floor also boasts two more sizeable bedrooms and the conveniently located laundry room to create a home perfect for your needs.

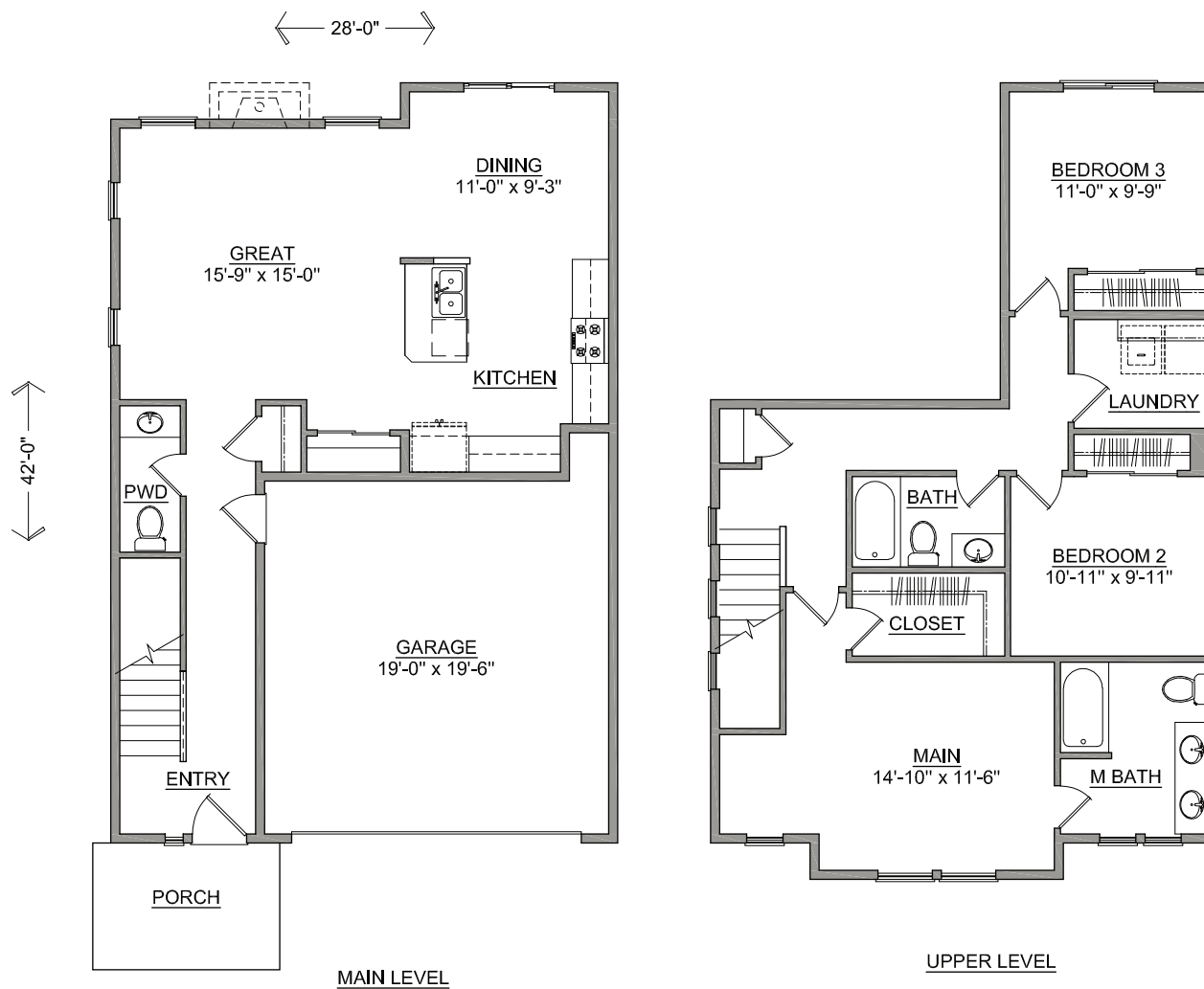


SIMPLICITY
BY HAYDEN HOMES

The **LINWOOD** home plan by Simplicity



3 BEDROOMS **2.5** BATHROOMS **1632** SQUARE FEET



SIMPLICITY
Signature
SERIES

Build your new home online at www.SIMPLICITY-HOMES.com

Prices, home designs and inclusive features are subject to change at any time without notice. Home plan dimensions and square footage are approximate. Area-specific inclusive features are subject to jurisdictional requirements. OR-185357 WA-SIMPLH915C8 ID-RCE34089