



The **KELSO** home plan by Simplicity



At 1623 square feet, the Kelso is a mid-size home that makes the most of its single-story layout. The open kitchen looks into the spacious living room and formal dining area under vaulted ceilings, providing ample room for relaxation and entertainment. Three sizeable bedrooms—one of which may be used as an optional den—are located down a private hallway and share a full bathroom. They are far removed from the privacy of the expansive main bedroom, which features a dual vanity ensuite and his-and-hers closets.

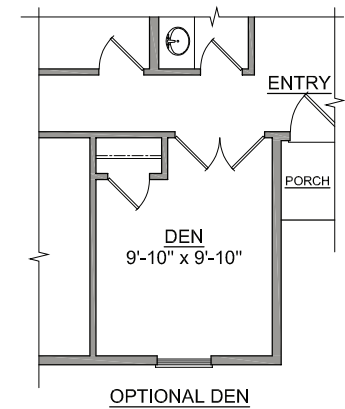
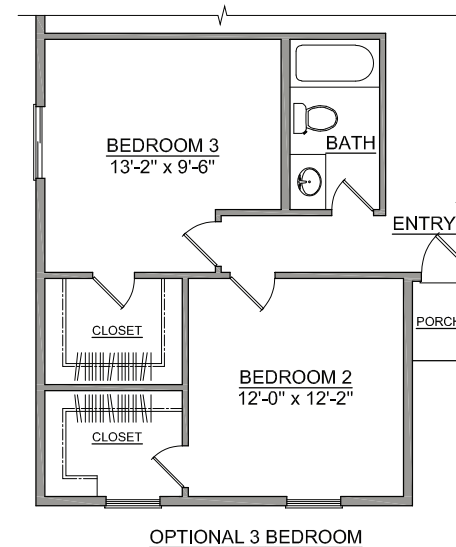
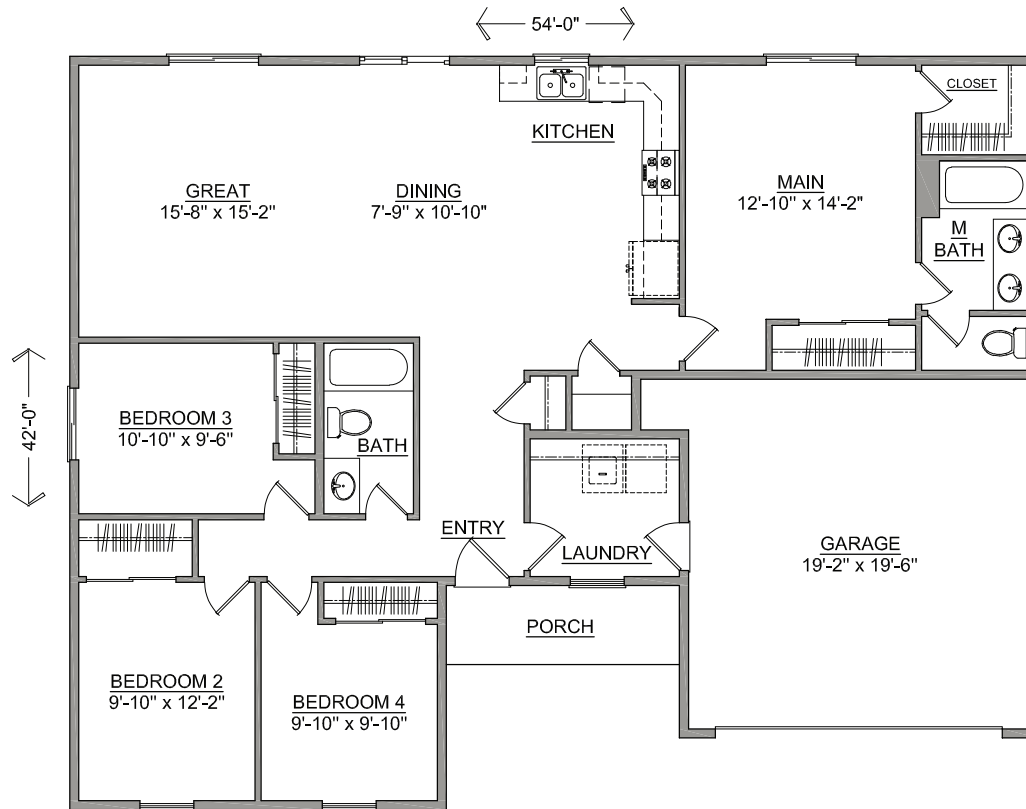


SIMPLICITY
BY HAYDEN HOMES

The **KELSO** home plan by Simplicity



4 BEDROOMS 2 BATHROOMS 1623 SQUARE FEET



Build your new home online at www.SIMPLICITY-HOMES.com