



The **JORDAN** home plan by Simplicity



Simplicity Homes presents the 1621 square foot Jordan to the list of smartly designed, alley-accessed garage homes that suit a variety of lifestyles. The Jordan opens to a beautiful entry and spacious great room with an optional built-in fireplace and shelving. Adjacent to the great room is a formal dining space and giant open kitchen with a walk-in pantry for kitchen and storage galore. For entertaining and convenience, the downstairs also includes a private powder room and pocket den that works well as a playroom, office or “man cave.” Upstairs, the Jordan plan offers a luxurious main suite with his-and-hers closets and a dual vanity ensuite. A full secondary bath serves the two additional bedrooms, and a nicely located laundry room helps keep life organized.

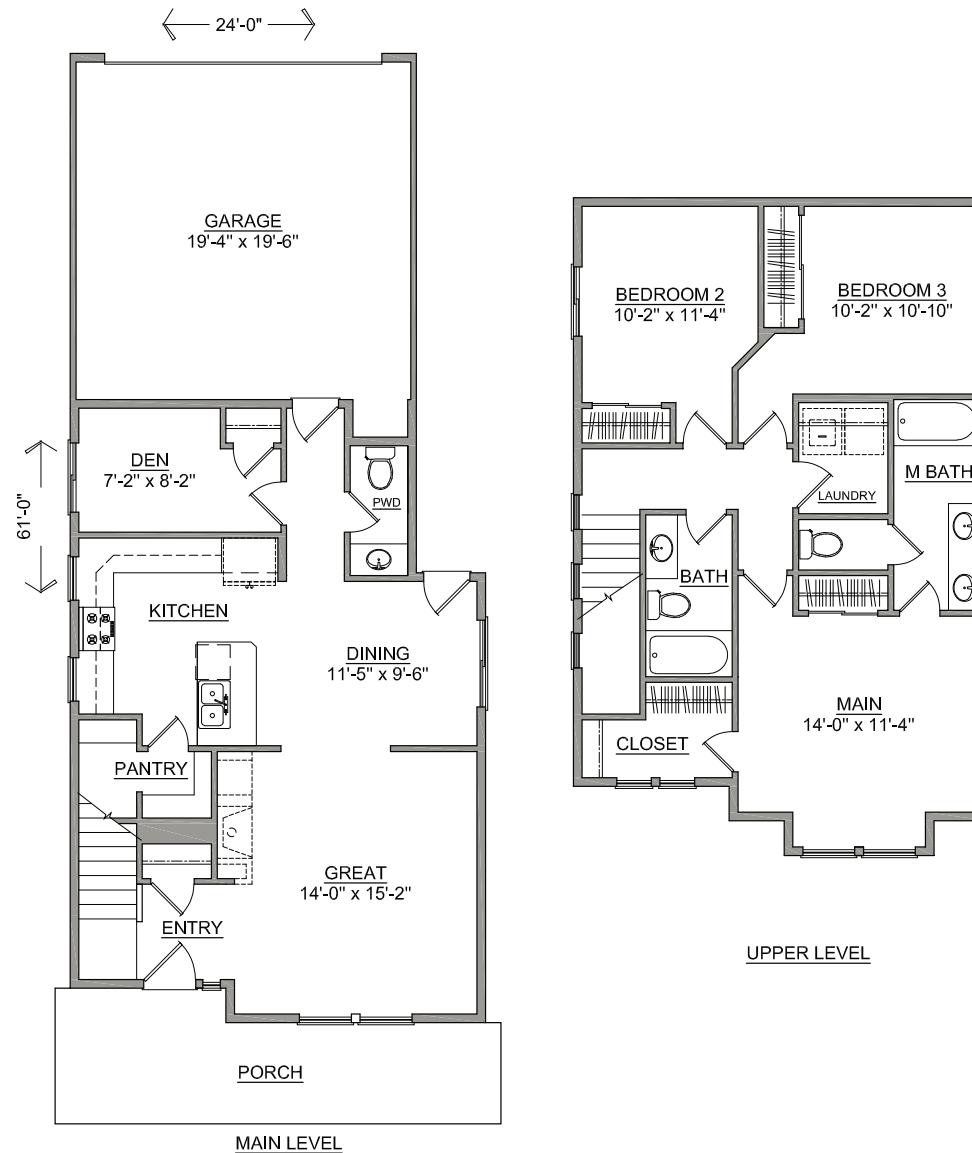


SIMPLICITY
BY HAYDEN HOMES

The **JORDAN** home plan by Simplicity



3 BEDROOMS **2.5** BATHROOMS **1621** SQUARE FEET



Build your new home online at www.SIMPLICITY-HOMES.com