



The **EDGEWOOD** home plan by Simplicity



The 1408 square foot Edgewood is a mid-sized home catering to those who value both comfort and efficiency in a single level home. An award-winning designed kitchen, featuring a breakfast bar and ample counter space, overlooks both the spacious living and dining rooms. The separate main suite affords you privacy and features two large closets in addition to a dual vanity ensuite. The two sizeable bedrooms—one of which may be used as an optional den—share a full bathroom and complete this design-smart home plan.

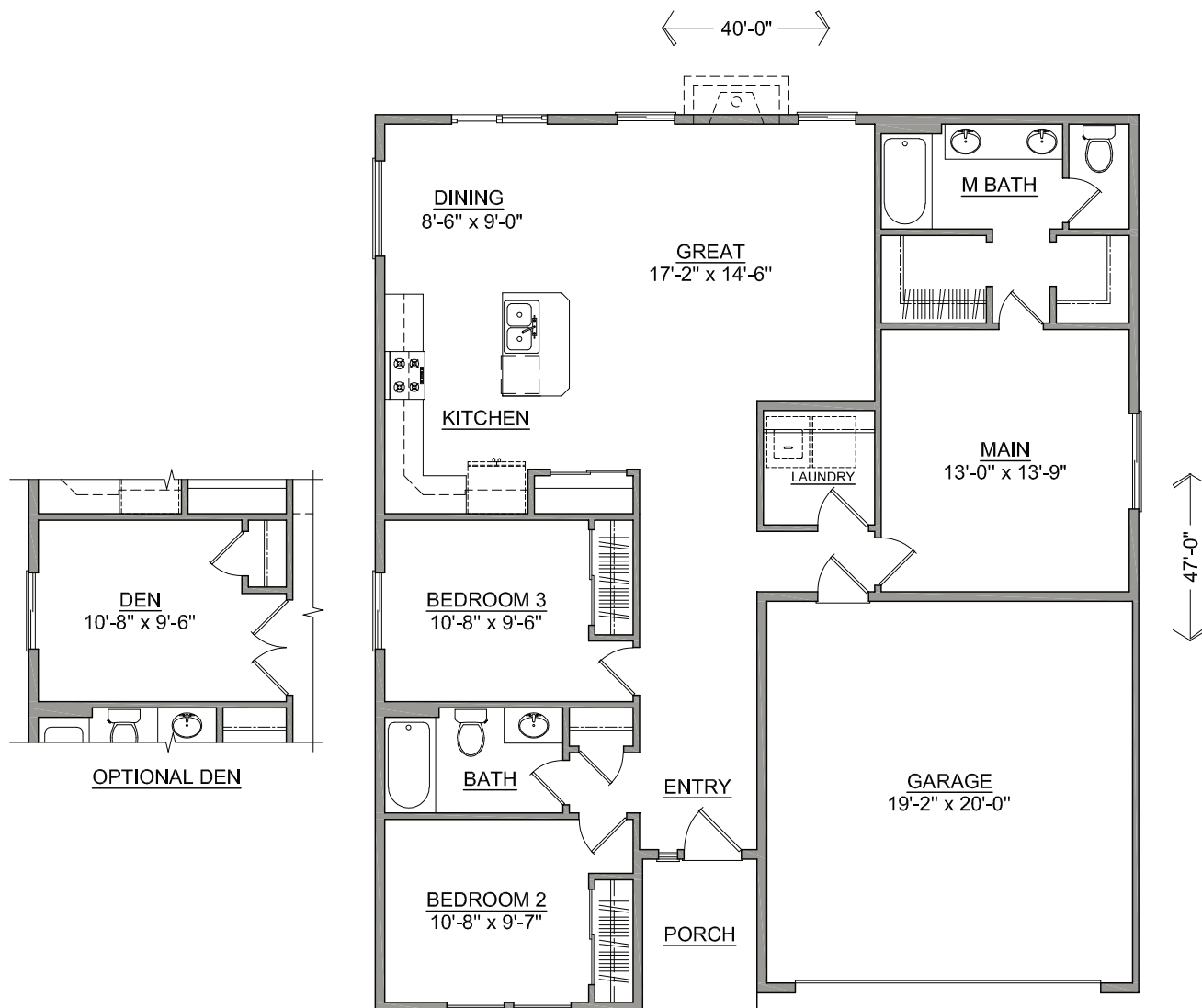


SIMPLICITY
BY HAYDEN HOMES

The **EDGEWOOD** home plan by Simplicity



3 BEDROOMS **2** BATHROOMS **1408** SQUARE FEET



SIMPLICITY
Signature
SERIES

Build your new home online at www.SIMPLICITY-HOMES.com