



The **CLEARWATER** home plan by Simplicity



The 1235 square foot Clearwater proves that a mid-size home can be more than it appears. Vaulted ceilings span the dining room as well as the spacious living room. An optional partition can separate these rooms for private dining and living spaces. The kitchen provides ample counter space and cupboard storage and is uniquely positioned in the front of the home. The main suite is expansive, features two spacious closets and an ensuite with dual vanity. Sharing the second bathroom, the other two bedrooms are sizable—one providing an oversized closet while the other may be converted into an optional den.

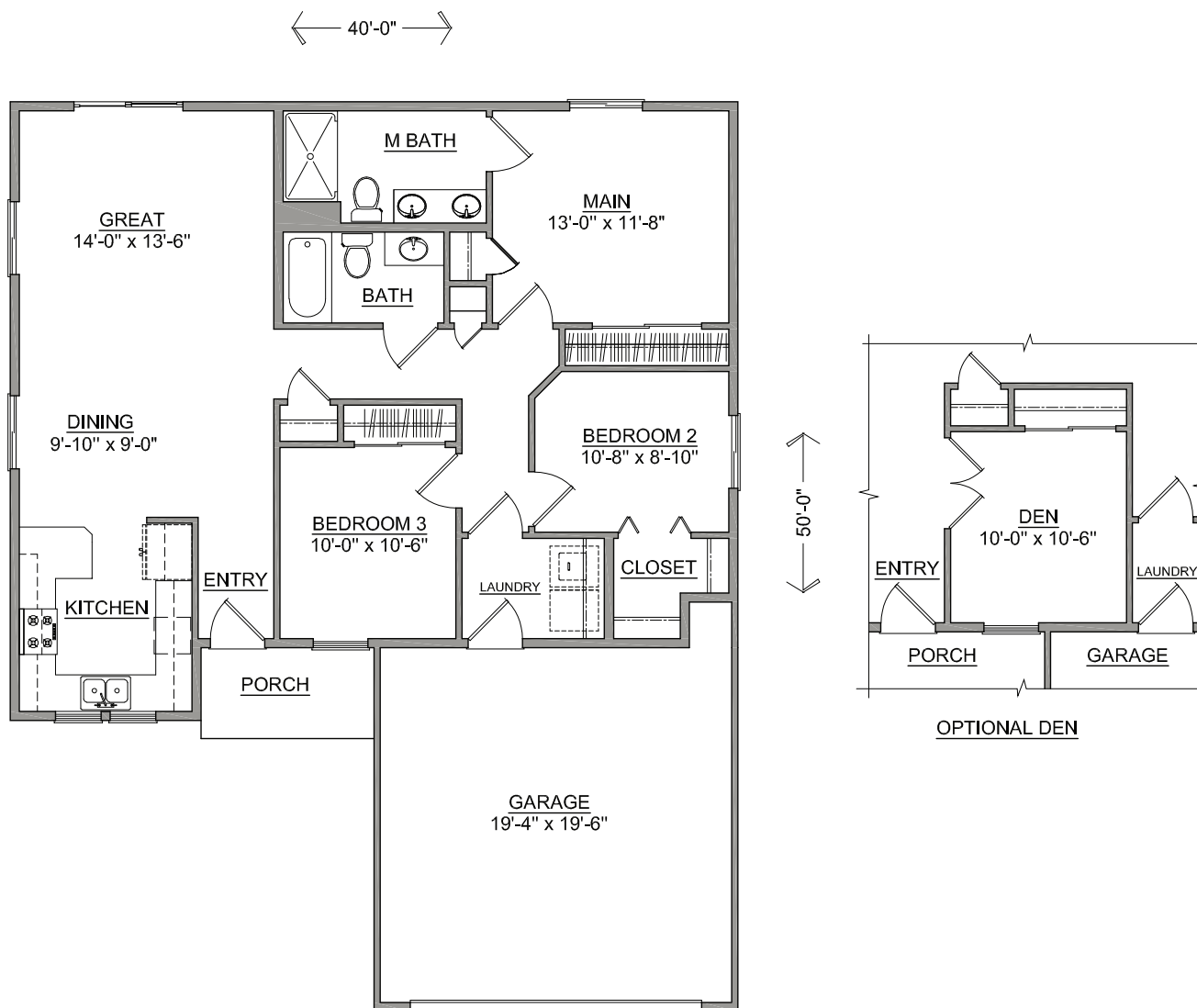


SIMPLICITY
BY HAYDEN HOMES

The **CLEARWATER** home plan by Simplicity



3 BEDROOMS 2 BATHROOMS 1235 SQUARE FEET



SIMPLICITY
Signature
SERIES

Build your new home online at www.SIMPLICITY-HOMES.com